

Early Learning News

July, August, September 2026

S H I N E



Highlights
2026
GULF COAST EARLY CHILDHOOD
SUMMER SYMPOSIUM
*Rooted & Rising:
Old School Wisdom, Leadership Reimagined*

2026 GULF COAST EARLY CHILDHOOD SUMMER SYMPOSIUM
pg 3



ACCREDITED
IACET
PROVIDER
CONTINUING EDUCATION
& TRAINING EXCELLENCE

ACCREDITED IACET
PROVIDER
pg 3



PASS ALONG TO PARENTS
RUSTY'S OUTDOOR LOOSE
PARTS GUIDE

pg 14



UNrattled
A PODCAST FOR PARENTS
Tiny Talks
ON EARLY LEARNING

GRECS PODCASTS SEASON 4
pg 17

Take a Look Inside

This edition of *Early Learning News* may have a different style, but it continues to be filled with helpful, relevant information.

The calendar view of our monthly training classes is perforated for easy removal. This allows you to tear it out and share as needed.

The "Pass Along to Parents" page is also perforated. This is a wonderful resource to share with parents, and it's copyright-free!

Community Highlights

page 2

IACET

page 3

Featured Courses

page 3,5

Pass Along to Parents

page 14

APT Training

page 17

GRECS Podcasts S.4

page 17

Nothing can dim the
Light that shines
from within.

—Maya Angelou

Community Highlights

Gulf Coast Early Childhood Summer Symposium 2026

GRECS was proud to host the Gulf Coast Early Childhood Summer Symposium (GCECSS) in Gulf Shores this year, bringing together early childhood professionals from across the region for a day of learning, networking, and inspiration.



With more than 350 attendees, this year's symposium was a tremendous success. We extend our sincere gratitude to our dedicated staff, presenters, exhibitors, sponsors, and attendees whose participation made this event possible. Your commitment to supporting quality early childhood education continues to strengthen our communities and positively impact the children and families we serve.



Throughout the symposium, participants engaged in informative sessions, explored valuable resources from exhibitors, and connected with fellow professionals who share a passion for early learning excellence. Thank you for helping make GCECSS 2026 such a memorable event.



We enjoyed celebrating, learning, and growing together and are already looking forward to welcoming everyone back next year.

Save the Date:

We look forward to seeing you again at the Gulf Coast Early Childhood Summer Symposium in **June 2027!**



30+ YEARS OF EXCELLENCE

GRECS RENEWED AS AN IACET ACCREDITED PROVIDER

We're Proud to Announce!

Gulf Regional Early Childhood Services (GRECS) has once again been approved as an IACET Accredited Provider—continuing a proud legacy of excellence we have maintained for over 30 years.

IACET is the premier standards-setting organization for continuing education and training. By sustaining this accreditation for more than three decades, GRECS remains part of an elite group of educators dedicated to the highest levels of quality in continuing education and training.

What this means for our community: Our Continuing Education Units (CEUs) meet the rigorous ANSI/IACET Standard for Continuing Education and Training. Our programs are thoroughly and independently assessed by a third party to ensure the highest benchmark of quality.



This milestone is a testament to our team's enduring hard work, **dedication, and unwavering commitment** to excellence in early childhood education.

Thank you for your continued support and partnership!



TRUSTED CEUs
You can trust the quality and value of GRECS continuing education.



INDEPENDENTLY ASSESSED
All programs are independently assessed by a third party.



ANSI/IACET STANDARDS
Our processes follow the rigorous ANSI/IACET Standard.



30+ YEARS OF EXCELLENCE
A proud legacy of quality and commitment.



GULF REGIONAL
Early Childhood Services

COMMITTED TO QUALITY
CONTINUING EDUCATION & TRAINING

*Empowering early childhood professionals.
Strengthening our community.*

Alabama Early Learning Guidelines - (AELG)

The Alabama Early Learning Guidelines were developed to promote continuity of high-quality care and learning for children ages 0-5. The AELG course serves as a guide for understanding child development and for implementing best practices to prepare children for success in school and in life. Participants who complete this course will receive 18 training hours and the official AELG Credential issued by the Alabama Department of Human Resources. **You must attend Session 1: Orientation before taking any other session.** (CDA Content Areas: 1, 2, 3, 4, 6, 7, 8 | DHR Categories: CD, CCPF, HSUP, LD, PDG, QCCL | Alabama Pathways to Quality and Education Core Areas: CGD, COA, DIV, HSN, ICFC, LEE, MA, PPD | CCDF: 5, 8, 13, 15, 16, 17, 18, 20) | [Register now at www.greecs.org!](http://www.greecs.org)

July 22, 2026 (Day 1)

8:30am-3:30pm

- Session 1 – Orientation
- Session 2 – Observations and Assessment
- Session 3 – The Role of Parent and Caregiver

August 26, 2026 (Day 2)

8:30am-3:30pm

- Session 4 – Self-Concept and Emotional Development
- Session 5 – Social Development
- Session 6 – Language and Literacy

September 23, 2026 (Day 3)

8:30am-3:30pm

- Session 7 – Physical Development
- Session 8 – Cognitive Development
- Session 9 – Putting It All Together

ALABAMA EARLY LEARNING GUIDELINES



Scan now to register!



If you have taken any AELG Sessions within the last year but missed a session, you can register, attend and make up those classes to complete and receive your AELG Credential!

Get To Know Our Training Sites and Locations!

When Registering for training classes, please make note of the time & locations of the session. Classes are held in 7 counties - Baldwin, Clarke, Conecuh, Escambia, Mobile, Monroe & Washington.

Baldwin County

Daphne Public Library
Kids Plus CDC

Goodwill Community Center

The Learning Tree at "First Fairhope"

Coastal Alabama Community College, Bay Minette Campus

Country Day School

Deliverance Child Care Center

Discovery Island, Orange Beach

Clarke County

Jackson City Hall

Conecuh County

David Burt Agriculture Center

Future Achievers

532 S. Main St Evergreen, AL 36401

Escambia County

Coastal Alabama Community College

Flomaton Public Library

Monroe County

Monroe County Public Library

Patty Pat's Day care Center #2

Mobile County

GRECS Training Rooms -

3101 International Dr, Building 6

Mars Hill Church

Washington County

Spot for Tots Child Care Center

Washington County Public Library



If you have any questions or need directions

Call us at
251-473-1060
or visit
www.greecs.org

CCDF Health and Safety Courses 2026

Looking for DHR CCDF Health and Safety Training Courses? We've got you covered for this quarter in July, August, and September 2026!

- **July 22:** CPR and First Aid Refresher; 9:30am-10:30am; Mobile
- **August 13:** Sudden Infant Death Syndrome (SIDS) Prevention and Use of Safe Sleep Practices CCDF: 2 Prevention of Shaken Baby Syndrome and Abusive Head Trauma CCDF: 6; 9:30am-11:30am; Mobile
- **September 9:** Preparing for the Unexpected CCDF: 5, 7; 6:00pm-8:00pm; Mobile
- **September 10:** First-Aid and CPR Training; 8:30am-12:30pm; Mobile
- **September 16:** A Prevention of and Response to Emergencies Due to Food and Allergic Reactions CCDF: 4 and Handling and Storage of Hazardous Materials, Including Correct Disposal of Bio-Contaminants CCDF: 8; 12:00pm-2:00pm; Mobile
- **September 17:** Hands Down, Clean Counts!; 6:30pm-8:30pm; Mobile
- **September 30:** Infection Control and Administration of Medication CCDF: 1, 3; 6:00pm-8:00pm; Mobile



Getting Started

We will introduce you to the foundational information you need to provide safe environments, nurturing interactions & developmentally appropriate experiences for the children in your care. This basic-level, 12 hour course is broken down into (3), four-hour segments. The training you receive will meet Alabama Department of Human Resources' 12-hour training requirement to work in child care.

You must attend all sessions to receive credit.

(Presenter: GRECS Staff; DHR: CD, CCPF, LD, QCCL, PDG, HSUP; Alabama Pathways: CGD, ICFC, LEE, HSN, PPD; CDA: 1, 2, 3, 4, 5, 6, 8; CCDF: 6, 11, 13, 15, 17, 20; Basic Training Level; 12 hours/1.2 CEUs; Appropriate for ALL Age Groups)

September 2nd-4th, 2026 | 8:30am - 12:30pm
GRECS Training Room, Mobile

Wednesday, Thursday, Friday

Highlighted Courses

July, August and September 2026



MAKING CENTER TIME MEANINGFUL

Discover practical ways to move students "from me to we" by cultivating a classroom culture grounded in empathy, kindness, and gratitude. In this session, you'll explore strategies and activities that build stronger connections, encourage caring behaviors, and help students develop the social-emotional skills they need to thrive together.

September 10, 2026
6:00pm-8:00pm

CCDF: 13, 17 | AL Pathways: CGD, LEE | CDA: 2, 3, 8 | DHR: CD, QCCL | Toddlers, Preschoolers | Intermediate | GRECS Training Room, Mobile

Presenter: Sussane Napp



Register Now

For more info see class listing, or scan QR code.

RESPONDING WITH PURPOSE: PROTECTING DIGNITY WHILE ADDRESSING BEHAVIOR



Everyone who works with children encounters behaviors that can be challenging to address. In this session, we will discuss the importance of responding to those moments in calm, respectful ways that support children and strengthen relationships.



September 8, 2026
6:00pm-8:00pm

CCDF: 13, 15, 19 | AL Pathways: ICFC, COA | CDA: 1, 3, 8 | DHR: CD, PDG | Preschoolers, School-Agers | Basic | ALL Counties Webinar

Presenter: Sandy Resa and Michelle Denney, Truman Pierce Institute



Register Now

For more info see class listing, or scan QR code.



Whole Child Literacy: Understanding The Foundations of Reading and Writing

Presenter: Stacy Bengé

August 7th, 2026 | 8:30am - 12:30pm

Stacy Bengé is an early childhood speaker who approaches learning in the early years with practicality and common sense. Standing firm on the truth that children learn best through simple, authentic experiences, she advocates for child-led play to build solid foundations for child development. In addition to a Master of Science degree in Human Development and Family Studies, Stacy spent 10 years in the early childhood classroom teaching children ages birth to five. As she has for the past 20 years, Stacy shares her enthusiasm for child development with fellow early learning professionals through enlightening and informative presentations. Stacy is the author of *The Whole Child Alphabet: How Young Children Actually Develop Literacy* published by Exchange Press. She is available for keynote presentations. Located in Texas, she presents virtually, locally, nationally, and internationally.



Register Now



Location:

Mars Hill Church.
1087 Downtowner Blvd,
Mobile, AL 36609

July '26 TRAINING

Learning Through Actions (APT)

July 7, 2026 | 6:00pm-8:00pm 2 hrs/0.2 CEUs

CCDF: 13, 14, 17 | AL Pathways: CGD, LEE | CDA: 2, 3, 8 | DHR: CD | School-Agers | Basic | GRECS Training Room, Mobile

PRESENTER: APT Staff

What is active learning? During this 2-hour training participants will learn what this term means and how to incorporate it into their daily classroom experiences. Participants will use children's books and PBS KIDS resources to create their own action plan to use after the training concludes.

Setting The Tone For Success: Launching a Great School Year

July 9, 2026 | 6:30pm-8:30pm 2 hrs/0.2 CEUs

CCDF: 13, 15 | AL Pathways: CGD, COA | CDA: 1, 2, 3 | DHR: QCCL, CD | ALL | Intermediate | GRECS Training Room, Mobile

PRESENTER: Erin Franklin

The goal of this training is for participants to understand how to establish a positive, structured, and inclusive classroom environment from the first day of school.

Shhh...The Children Are Talking

July 14, 2026 | 6:00pm-8:00pm 2 hrs/0.2 CEUs

CCDF: 13, 19 | AL Pathways: ICFC | CDA: 2, 3 | DHR: PDG, LD | ALL | Basic | GRECS Training Room, Mobile

PRESENTER: Desira Keith

Participants in this session will learn how adult attitudes, expectations, and behaviors can impact children's confidence, independence, and learning experiences. Through discussion and real-life examples, educators will explore ways to better listen to children, respect their ideas and feelings, and create classrooms that are supportive, fair, and developmentally appropriate. Participants will leave with practical strategies to build stronger relationships with children and encourage positive interactions that help every child feel valued and heard.

Collaborative Conversations: Effective Parent/Teacher Conferences

July 16, 2026 | 4:00pm-6:00pm 2 hrs/0.2 CEUs

CCDF: 16, 18, 20 | AL Pathways: COA, MA, ICFC | CDA: 4, 7, 8 | DHR: CCPF, QCCL, AM | ALL | Basic | GRECS Training Room, Mobile

PRESENTER: Paula Reese

Participants will focus on transforming traditional conferences into two-way dialogues. It emphasizes building relationships with families before, during, and after meetings, shifting the focus from simply updating parents to nurturing a collaborative approach for the child's development.

Alabama Quality STARS: Lift Them Higher with Quality Early Care and Education

July 17, 2026 | 9:30am-11:30am 2 hrs

CCDF: 13, 20 | AL Pathways: LEE, PPD, MA | CDA: 5, 6 | DHR: QCCL, CCPF, AM | ALL | Basic | ALL Counties Webinar

PRESENTER: Symone Mixon, Amber Edwards, Rachel Kitsos

This session provides an overview of the Alabama Quality STARS: Quality Rating Improvement System (QRIS), a systemic approach to assessing, improving, and communicating the level of quality in early childhood education programs. In addition, participants will take a closer look at the Best Practice Verification Manual and define program standards that are comprised of standardized, research-based criteria. Participants will gain a better understanding of the requirements for obtaining a higher star rating. *No CEU Credit is awarded*

Acting It Out: How Dramatic Play Supports Early Childhood Development

July 21, 2026 | 6:30pm-8:30pm 2 hrs/0.2 CEUs

CCDF: 13, 20 | AL Pathways: CGD, LEE | CDA: 2, 3, 8 | DHR: CD, QCCL | Infants, Toddlers, Preschoolers | Basic | GRECS Training Room, Mobile

PRESENTER: Victoria Bolton

This course introduces educators to the importance of dramatic play in supporting young children's development. Participants will learn what dramatic play is, how it promotes social, emotional, language, and cognitive growth, and how teachers can effectively support and extend play. Educators will also explore practical strategies to strengthen dramatic play experiences in the classroom, creating engaging and developmentally appropriate learning environments.

Day 1: Alabama Early Learning Guidelines (AELG) Sessions 1, 2, 3

July 22, 2026 | 8:30am-3:30pm 6 hrs/0.6 CEUs

CCDF: 5, 8, 13, 15, 16, 17, 18, 20 | AL Pathways: CGD, COA, DIV, HSN, ICFC, LEE, MA, PPD | CDA: 1, 2, 3, 4, 6, 7, 8 | DHR: CD, CCPF, HSUP, LD, PDG, QCCL | ALL | Basic | GRECS Training Room, Mobile

PRESENTER: GRECS Staff

Session 1 – Orientation *Must attend before taking other sessions*

8:30-10:30 (see page 3 for more information)

Session 2 – Observations & Assessment 10:30-12:30

Session 3 – The Role of Parent and Caregiver 1:30-3:30

CPR and First Aid Refresher

July 22, 2026 | 9:30am-10:30am 1 hr

CCDF: 10R | AL Pathways: HSN | CDA: 1 | DHR: HSUP | ALL | Basic | GRECS Training Room, Mobile | *No CEU Credit is awarded*

PRESENTER: Judy Cunningham

Did you know? DHR recommends that you should take a CPR and First Aid refresher course every 12 months after your initial certification. It is the halfway point between your original certification and when you are required to renew so it's a pretty good rule to follow. This session provides participants with the CCDF category for the CPR refresher, 10R. The purpose of this training is to provide participants with CPR and basic First Aid refresher facts. No skills or return demonstration during this class.

Seamless Inclusion: Adapting Daily Procedures for Diverse Learning Needs

July 23, 2026 | 5:30pm-7:30pm 2 hrs/0.2 CEUs

CCDF: 13, 16, 17 | AL Pathways: CGD, LEE, ICFC | CDA: 1, 2, 3, 8 | DHR: QCCL, CD | ALL | Basic | GRECS Training Room, Mobile

PRESENTER: Susanne Napp

This course is designed to help educators move beyond "accommodation" and toward a classroom where every child belongs. Participants will explore how to adjust their existing classroom routines—from arrival to dismissal—to identify and remove barriers for children with diverse learning, sensory, and physical needs.

We are dedicated to providing the highest quality experience for child care providers seeking assistance and training that enhances the quality of care for children in south Alabama. With the support of our funding partners, all GRECS training is offered at no cost to participants.

Empowering Kids Through Daily Affirmations

July 28, 2026 | 6:30pm-8:30pm 2 hrs/0.2 CEUs

CCDF: 13, 19 | AL Pathways: CGD, LEE | CDA: 4, 6 | DHR: CD, LD | Preschoolers, School-Agers | Basic | GRECS Training Room, Mobile

PRESENTER: Wanda Belt

To equip early childhood educators with DAP strategies for using daily affirmations to build children's self-esteem, emotional regulation, positive self-talk and sense of belonging.

Alabama Pathways Professional Development Registry - PDR Information

July 29, 2026 | 10:00am-12:00pm 2 hrs

CCDF: 18 | AL Pathways: PPD | CDA: 5, 6 | DHR: QCCL, CCPF | ALL | Basic | ALL Counties Webinar

PRESENTER: Bernice Pettway, DHR

Participants will discuss the goal of Alabama pathways and how it can help early childhood professionals. Tutorial on the PDR. *No CEU Credit is awarded*

Music, Melody and Emotions (APT)

July 30, 2026 | 6:00pm-8:00pm 2 hrs/0.2 CEUs

CCDF: 13 | AL Pathways: CGD | CDA: 2, 3, 7 | DHR: CD | Preschoolers | Basic | Deliverance Child Care Center, Bay Minette, AL

PRESENTER: Valerie Silcox

Music can be a powerful tool for helping preschoolers understand and manage their emotions. In this 2-hour training, the participants will learn how to support children's various emotional expressions while listening to various genres of music. Through group discussions and activities, the participants will learn how to build empathy and how to assist children with emotional regulation through music.

Culturally-Sensitive Classroom

July 31, 2026 | 10:00am-12:00pm 2 hrs/0.2 CEUs

CCDF: 13, 16 | AL Pathways: CGD, ICFC | CDA: 2, 3, 4 | DHR: CD, CCPF | ALL | Basic | Discovery Island - 24843 Commercial Ave Orange Beach, AL 36561

PRESENTER: Vicki Giles

This course explores the importance of culturally-sensitive care in early childhood classrooms and how culture shapes each child's development, identity, and learning experiences. Participants will discover practical strategies to create culturally responsive environments that foster inclusion, respect, and meaningful connections with children and families.

August '26 TRAINING

Setting The Tone For Success: Launching a Great School Year

August 4, 2026 | 6:00pm-8:00pm 2 hrs/0.2 CEUs

CCDF: 13, 15 | AL Pathways: CGD, COA | CDA: 1, 2, 3 | DHR: QCCL, CD | ALL | Intermediate | The Learning Tree at First Fairhope

PRESENTER: Erin Franklin

The goal of this training is for participants to understand how to establish a positive, structured, and inclusive classroom environment from the first day of school.

We are dedicated to providing the highest quality experience for child care providers seeking assistance and training that enhances the quality of care for children in south Alabama. With the support of our funding partners, all GRECS training is offered at no cost to participants.

Music, Melody and Emotions (APT)

August 4, 2026 | 5:30pm-7:30pm 2 hrs/0.2 CEUs

CCDF: 13 | AL Pathways: CGD | CDA: 2, 3, 7 | DHR: CD | Preschoolers | Basic | Spots for Tots Child Care Center, Chatom, AL

PRESENTER: Valerie Silcox

Music can be a powerful tool for helping preschoolers understand and manage their emotions. In this 2-hour training, the participants will learn how to support children's various emotional expressions while listening to various genres of music. Through group discussions and activities, the participants will learn how to build empathy and how to assist children with emotional regulation through music.

Count On It! Simple Strategies for Building Number Sense and Math

August 6, 2026 | 6:00pm-8:00pm 2 hrs

CCDF: 13, 19 | AL Pathways: ICFC, LEE | CDA: 2, 8 | DHR: CD | Preschoolers, School-Agers | Basic | ALL Counties Webinar

PRESENTER: Sandy Resa and Michelle Denney

From snack time to playtime, math is everywhere. Join us as we explore simple, approachable ways to build students' number sense and confidence through daily interactions, play, and real-world connections. Learn how to integrate math into routines, conversations, and activities in ways that feel natural and meaningful. We will focus on strategies that meet children where they are, build on their individual strengths, and support mathematical thinking across developmental levels. No advanced math knowledge required—just a willingness to notice and nurture the math already happening around you while helping students see its relevance in their everyday lives.

Whole Child Literacy: Understanding The Foundations of Reading and Writing

August 7, 2026 | 8:30am-12:30pm 4 hrs/0.4 CEUs

CCDF: 13, 15, 17, 20 | AL Pathways: CGD, LEE, ICFC | CDA: 1, 2, 3, 8 | DHR: CD, QCCL, PDG, AM, LD | ALL | Intermediate | Mars Hill Church, 1087 Downtowner Blvd, Mobile, AL 36609

PRESENTER: Stacy Bengé

Everything has a starting point when it comes to child development and learning. This includes the ability to read and write. Literacy is more than merely memorizing the alphabet, it is the development of the whole child. To help children become successful readers, they need to develop visual perception skills, phonological awareness, physical development, and, most importantly, and interest and connection to literacy.

Let's Talk: The Power of Language for Infants and Toddlers (APT)

August 11, 2026 | 5:30pm-7:30pm 2 hrs/0.2 CEUs

CCDF: 13 | AL Pathways: CGD | CDA: 3, 7, 8 | DHR: CD, LD | Infants, Toddlers | Basic | GRECS Training Room, Mobile

PRESENTER: Victoria Bolton

In this training, we will learn how speech and language develop, milestones for normal speech and language development as well as ways to support language development through hands-on activities, PBS KIDS and APT resources, and discussions.

Teasing, Bullying and Being Left Out

August 13, 2026 | 6:00pm-8:00pm 2 hrs/0.2 CEUs

CCDF: 13, 19 | AL Pathways: CGD | CDA: 2, 3 | DHR: CD, PDG | Preschoolers, School-Agers | Basic | GRECS Training Room, Mobile

PRESENTER: Vicki Giles

Have you noticed your preschoolers being teased, bullied, or left out by their peers? In this session, we'll learn how to help preschoolers use assertive language to more effectively handle these challenging social situations.

August '26 TRAINING

Continued..

Literacy: Author's Study and Poetry (APT)

August 18, 2026 | 6:00pm-8:00pm 2 hrs/0.2 CEUs

CCDF: 13, 19 | AL Pathways: CGD, LEE | CDA: 2, 3 | DHR: CD, LD | School-Agers | Intermediate | GRECS Training Room, Mobile

PRESENTER: Desira Keith

Highlighting the PBS KIDS show Xavier Riddle and the Secret Museum, participants will delve into how to effectively incorporate authors studies and poetry into the classroom setting. Through hands-on demonstrations and activities, the participants will learn ways to improve their children's writing skills.

Sudden Infant Death Syndrome (SIDS) Prevention and Use of Safe Sleep Practices CCDF: 2 Prevention of Shaken Baby Syndrome and Abusive Head Trauma CCDF: 6

August 19, 2026 | 9:30am-11:30am 2 hrs

CCDF: 2, 6 | AL Pathways: HSN | CDA: 1 | DHR: HSUP | ALL | Basic | GRECS Training Room, Mobile

PRESENTER: Desira Keith

Participants will discuss ways to prevent Sudden Infant Death Syndrome (SIDS) and Use of Safe Sleep Practices and Identify signs of Shaken Baby Syndrome and Abusive Head Trauma and discuss ways to prevent Shaken Baby Syndrome. *No CEU Credit is awarded*

Making Connections (APT)

August 20, 2026 | 6:00pm-8:00pm 2 hrs/0.2 CEUs

CCDF: 13, 16, 20 | AL Pathways: CGD, LEE, ICFC | CDA: 1, 2, 3, 4, 8 | DHR: CD, CCPF | Infants, Toddlers | Basic | GRECS Training Room, Mobile

PRESENTER: APT Staff

This training is designed to build family connections in the infant and toddler classroom. It will provide ideas on how to establish strong home-school connections that support the whole child's development. Let's learn simple ways to intentionally keep families informed, involved and engaged.

Breaking It Down: Computational Thinking (APT)

August 25, 2026 | 6:00pm-8:00pm 2 hrs/0.2 CEUs

CCDF: 13, 17 | AL Pathways: CGD, LEE | CDA: 2, 3 | DHR: CD | Preschoolers | Basic | GRECS Training Room, Mobile

PRESENTER: Wanda Belt

What is computational thinking? It is breaking down complex tasks into smaller steps. In this two-hour training, we will utilize hands-on games, activities and the PBS KIDS show Work It Out Wombats! and resources to demonstrate and understand computational thinking.

Day 2: Alabama Early Learning Guidelines (AELG) Sessions 4, 5, 6

August 26, 2026 | 8:30am-3:30pm 6 hrs/0.6 CEUs

CCDF: 5, 8, 13, 15, 16, 17, 18, 20 | AL Pathways: CGD, COA, DIV, HSN, ICFC, LEE, MA, PPD | CDA: 1, 2, 3, 4, 6, 7, 8 | DHR: CD, CCPF, HSUP, LD, PDG, QCCL | ALL | Basic | GRECS Training Room, Mobile

PRESENTER: GRECS Staff

Session 4 – Self-Concept & Emotional Development 8:30-10:30

Session 5 – Social Development 10:30-12:30

Session 6 – Language and Literacy 1:30-3:30

Positive Guidance for Infants, Toddlers and Preschoolers (CTF)

August 31, 2026 | 6:00pm-8:00pm 2 hrs/0.2 CEUs

CCDF: 13, 15, 20 | AL Pathways: CGD, COA | CDA: 2, 3, 8 | DHR: CD, PDG | Infants, Toddlers, Preschoolers | Intermediate | GRECS Training Room, Mobile

PRESENTER: Dr. Abigail Baxter

Conflicts between young children are all too common. Learn some easy, effective strategies for responding to children's behavior and helping children learn important skills for resolving their own conflicts.

September '26 TRAINING

One Book, Endless Learning Opportunities Session 1: Back-to-School & Community Connections

September 1, 2026 | 6:00pm-8:00pm 2 hrs/0.2 CEUs

CCDF: 13, 15, 17 | AL Pathways: CGD, LEE | CDA: 1, 2, 3, 8 | DHR: LD, PDG | Preschoolers, School-Agers | Intermediate | GRECS Training Room, Mobile

PRESENTER: Karen Morrison, PhD

Discover how children's books can help build classroom community and support learning routines at the beginning of the year. Participants will explore ways to extend books into circle time, small groups, learning centers, and creative art experiences. Themes include back-to-school, friendship, feelings, and classroom routines. Educators will leave with practical literacy-based activities that promote social-emotional learning and classroom engagement.

Getting Started 2026 (CTF)

September 2-4, 2026 | 8:30am-12:30pm 12 hrs/1.2 CEUs

CCDF: 6, 11, 13, 15, 17, 20 | AL Pathways: CGD, ICFC, LEE, HSN, PPD | CDA: 1, 2, 3, 4, 5, 6, 8 | DHR: CD, CCPF, LD, QCCL, PDG, HSUP | ALL | Basic | GRECS Training Room, Mobile

PRESENTER: GRECS Staff

See page 4 for more information. *You must attend all sessions to receive credit!*

Thriving Together (APT)

September 2, 2026 | 6:00pm-8:00pm 2 hrs

CCDF: 13, 16, 17, 20 | AL Pathways: CGD, LEE, ICFC | CDA: 1, 3, 4, 7, 8 | DHR: CCPF, CD | Infants, Toddlers | Basic | ALL Counties Webinar

PRESENTER: APT Staff

Helping young children feel safe and learn to cope is a crucial part of early childcare. This training will equip us with skills to understand the stress, adversity or trauma that families may face. We will discuss best practices for how to support young children and their families to foster resilience using helpful resources from Sesame Workshop.

We are dedicated to providing the highest quality experience for child care providers seeking assistance and training that enhances the quality of care for children in south Alabama. With the support of our funding partners, all GRECS training is offered at no cost to participants.

September '26 TRAINING

Continued..

The Importance of Building Healthy Relationships Between Teachers and Students

September 3, 2026 | 6:30pm-8:30pm 2 hrs/0.2 CEUs

CCDF: 13, 20 | AL Pathways: ICFC, COA | CDA: 1, 3, 8 | DHR: CCPF, PDG | ALL | Basic | GRECS Training Room, Mobile

PRESENTER: Erin Franklin

The goal of this training is for participants to recognize how strong, positive teacher-child relationships support brain development, emotional security, behavior regulation, and lifelong learning.

Responding with Purpose: Protecting Dignity while Addressing Behavior

September 8, 2026 | 6:00pm-8:00pm 2 hrs/0.2 CEUs

CCDF: 13, 15, 19 | AL Pathways: ICFC, COA | CDA: 1, 3, 8 | DHR: CD, PDG | Preschoolers, School-Agers | Basic | ALL Counties Webinar

PRESENTER: Sandy Resa and Michelle Denney

Everyone who works with children encounters behaviors that can be challenging to address. In this session, we will discuss the importance of responding to those moments in calm, respectful ways that support children and strengthen relationships. Participants will learn practical de-escalation strategies and supportive language that can help children – and adults – regulate emotions in the moment. This interactive session focuses on realistic tools educators can use right away to choose intentional responses that teach skills rather than simply stopping behavior.

Preparing for the Unexpected CCDF: 5, 7

September 9, 2026 | 6:00pm-8:00pm 2 hrs

CCDF: 5, 7 | AL Pathways: HSN | CDA: 1 | DHR: HSUP | ALL | Basic | GRECS Training Room, Mobile | No CEU Credit is awarded

PRESENTER: Avery Fick

During this session we will explore major causes of disaster possible in our area, recognize ways to safely prepare and experience these by good hazard recognition and response in the childcare setting. We will explore rules for good preparation, common issues that occur in disaster emergencies and risk factors that require further attention.

First-Aid and CPR Training

September 10, 2026 | 8:30am-12:30pm 4 hrs

CCDF: 10 | AL Pathways: HSN | CDA: 1 | DHR: HSUP | ALL | Basic | GRECS Training Room, Mobile

PRESENTER: Pamela Senters

This training is to provide participants with the practice and assimilation of skills to perform CPR and Basic First-aid with a certification from The Emergency Care and Safety Institute (ECSI) for the child care setting. *No CEU Credit is awarded*

Making Center Time Meaningful

September 10, 2026 | 6:00pm-8:00pm 2 hrs/0.2 CEUs

CCDF: 13, 17 | AL Pathways: CGD, LEE | CDA: 2, 3, 8 | DHR: CD, QCCL | Toddlers, Preschoolers | Intermediate | GRECS Training Room, Mobile

PRESENTER: Susanne Napp

Center time is a vital part of the early childhood classroom. This course offers practical strategies to design and manage centers that align with your weekly curriculum. Participants will learn how to create organized, age-appropriate environments that foster deep student engagement and academic growth.

Tender Loving CARE for Infants and Toddlers

September 15, 2026 | 6:00pm-8:00pm 2 hrs/0.2 CEUs

CCDF: 15, 17 | AL Pathways: ICFC, CGD, HSN | CDA: 1, 3, 8 | DHR: CCPF, HSUP | Infants, Toddlers | Basic | GRECS Training Room, Mobile

PRESENTER: Vicki Giles

Positive caregiver practices allow for connecting with families and the development of appropriate activities and routines, responsive caregiving, and a safe, appropriate environment. All of these add up to Tender Loving CARE.

A Prevention of and Response to Emergencies Due to Food and Allergic Reactions CCDF: 4 and Handling and Storage of Hazardous Materials, including Correct Disposal of Bio-Contaminants CCDF: 8

September 16, 2026 | 2:00pm-4:00pm 2 hrs

CCDF: 4, 8 | AL Pathways: HSN | CDA: 1 | DHR: HSUP | ALL | Basic | GRECS Training Room, Mobile

PRESENTER: Avery Fick

We will introduce you to the foundational information you need to provide safe and healthy environments in the child care setting. Participants will discuss the Prevention of and Response to Emergencies Due to Food and Allergic Reactions and hazardous materials. *No CEU Credit is awarded*

Hands Down, Clean Counts! CCDF: 1, 8

September 17, 2026 | 6:30pm-8:30pm 2 hrs/0.2 CEUs

CCDF: 1, 8 | AL Pathways: HSN, PPD | CDA: 1, 5 | DHR: HSUP | ALL | Basic | GRECS Training Room, Mobile

PRESENTER: Wanda Belt

This training provides childcare staff with essential knowledge and practical strategies for maintaining a clean, safe, and healthy learning environment through proper handwashing, diapering, and table washing procedures. Participants will learn best practices for effective hygiene and sanitation in accordance with childcare health and safety standards to reduce the spread of germs and prevent cross-contamination. Through discussion, demonstration, and hands-on practice, staff will gain the skills needed to correctly implement sanitation procedures, promote healthy habits among children, and maintain compliance within the childcare setting.

Alabama Quality STARS: Lift Them Higher with Quality Early Care and Education

September 18, 2026 | 9:30am-11:30am 2 hrs

CCDF: 13, 20 | AL Pathways: LEE, PPD, MA | CDA: 5, 6 | DHR: QCCL, CCPF, AM | ALL | Basic | GRECS Training Room, Mobile

PRESENTER: Symone Mixon, Amber Edwards, Rachel Kitsos

This session provides an overview of the Alabama Quality STARS: Quality Rating Improvement System (QRIS), a systemic approach to assessing, improving, and communicating the level of quality in early childhood education programs. In addition, participants will take a closer look at the Best Practice Verification Manual and define program standards that are comprised of standardized, research-based criteria. Participants will gain a better understanding of the requirements for obtaining a higher star rating. *No CEU Credit is awarded*

September '26 TRAINING

Continued..

Introduction to the Child Development Associate (CDA) Credential

September 21, 2026 | 6:00pm-8:00pm 2 hrs

CCDF: 20 | AL Pathways: PPD | CDA: 6 | DHR: QCCL, CCPF | ALL | Basic | GRECS Training Room, Mobile

PRESENTER: Desira Keith

This introduction is designed for any professional early child care educator considering applying for the CDA credential. **No CEU Credit is awarded**

Positive Guidance: "Strategies for Challenging Behaviors"

September 22, 2026 | 6:30pm-8:30pm 2 hrs/0.2 CEUs

CCDF: 13, 15 | AL Pathways: CGD, COA | CDA: 3, 5 | DHR: CD, PDG | ALL | Basic | GRECS Training Room, Mobile

PRESENTER: Paula Reese

Participants will state strategies to support challenging behaviors and Early Childhood Positive Behavior Interventions and Support for a high-quality classroom environment.

Day 3: Alabama Early Learning Guidelines (AELG) Sessions 7, 8, 9

September 23, 2026 | 8:30am-3:30pm 6 hrs/0.6 CEUs

CCDF: 5, 8, 13, 15, 16, 17, 18, 20 | AL Pathways: CGD, COA, DIV, HSN, ICFC, LEE, MA, PPD | CDA: 1, 2, 3, 4, 6, 7, 8 | DHR: CD, CCPF, HSUP, LD, PDG, QCCL | ALL | Basic | GRECS Training Room, Mobile

PRESENTER: GRECS Staff

Session 7 – Physical Development 8:30-10:30

Session 8 – Cognitive Development 10:30-12:30

Session 9 – Putting It All Together 1:30-3:30

We appreciate your respect of our training policies and procedures. Training policies can be found during the online registration process and at www.grecs.org. We look forward to providing an effective learning environment for all of our participants. Prerequisites and required technology, when applicable, will be communicated to participants prior to the training session, and will be clearly noted in the course description and the official training calendar.

Seeing and Supporting Every Child: Neurodivergence in Infants and Toddlers

September 24, 2026 | 6:00pm-8:00pm 2 hrs/0.2 CEUs

CCDF: 13, 20 | AL Pathways: CGD, LEE | CDA: 2, 3, 8 | DHR: CD, PDG | Infants, Toddlers | Intermediate | GRECS Training Room, Mobile

PRESENTER: Victoria Bolton

Gain a deeper understanding of neurodivergence and what it looks like in infants and toddlers. Discover how to better support every child's unique way of learning and create a more inclusive, responsive environment where all children can thrive.

Come Sit... or Come Play? Rethinking Circle Time

September 29, 2026 | 6:00pm-8:00pm 2 hrs/0.2 CEUs

CCDF: 13, 17 | AL Pathways: CGD, LEE | CDA: 2, 3, 8 | DHR: CD, LD | Toddlers, Preschoolers | Intermediate | Kid Plus Child Development Center 900 S Bay St, Foley, AL 36535

PRESENTER: Victoria Bolton and Vicki Giles

Is circle time always developmentally appropriate for toddlers and preschoolers? This session examines circle time through the lens of best practices. We will focus on how young children learn best through active engagement, play, and meaningful interactions.

Learning Environment for Infants and Toddlers (APT)

September 29, 2026 | 6:30pm-8:30pm 2 hrs/0.2 CEUs

CCDF: 13, 20 | AL Pathways: LEE | CDA: 1, 3, 8 | DHR: CD | Infants, Toddlers | Basic | GRECS Training Room, Mobile

PRESENTER: Valerie Silcox

Just as adults are affected by their environment, infants and toddlers are affected by theirs as well. In conjunction with PBS Kids shows and resources, we will examine learning environments that promote safety and security that will meet the needs of infants and toddlers

Infection Control and Administration of Medication

CCDF:1, 3

September 30, 2026 | 6:00pm-8:00pm 2 hrs

CCDF: 1, 3 | AL Pathways: HSN | CDA: 1 | DHR: HSUP | ALL | Basic | GRECS Training Room, Mobile

PRESENTER: Avery Fick






Participants will explore, how germs are spread while also identifying situations which may require administration of medications and list the symptoms of allergies. **No CEU Credit is awarded**

We are dedicated to providing the highest quality experience for child care providers seeking assistance and training that enhances the quality of care for children in south Alabama. With the support of our funding partners, all GRECS training is offered at no cost to participants.

July 2026

| Monday | Tuesday | Wednesday | Thursday | Friday | Saturday |
|---|--|--|---|--|---|
|  | | 1 | 2 | 3 GRECS & EHS Closed for Independence Day Observed | 4  |
| 6 | 7 <i>Learning Through Actions (APT)</i> ; 6:00pm-8:00pm; Mobile | 8 | 9 <i>Setting the Tone for Success: Launching a Great School Year</i> ; 6:30pm-8:30pm; Mobile | 10 | 11  |
| 13  | 14 <i>Shhh...The Children are Talking</i> ; 6:00pm-8:00pm; Mobile | 15  | 16 <i>Collaborative Conversations: Effective Parent/Teacher Conferences</i> ; 4:00pm-6:00pm; Mobile | 17 <i>Alabama Quality STARS: Lift Them Higher With Quality Early Care and Education</i> ; 9:30am-11:30am; Webinar | 18 |
| 20 | 21 <i>Acting It Out: How Dramatic Play Supports Early Childhood Development</i> ; 6:30pm-8:30pm; Mobile | 22 (Day 1: <i>Alabama Early Learning Guidelines AELG</i>) Sessions 1, 2, 3; 8:30am-3:30pm; Mobile  <i>CPR and First Aid Refresher</i> ; 9:30am-10:30am; Mobile | 23 <i>Seamless Inclusion: Adapting Daily Procedures for Diverse Learning Needs</i> ; 5:30pm-7:30pm; Mobile | 24  | 25 |
| 27  | 28 <i>Empowering Kids Through Daily Affirmations</i> ; 6:30pm-8:30pm; Mobile | 29 <i>Alabama Pathways Professional Development Registry-PDR Information</i> ; 10:00am-12:00pm; Webinar | 30 <i>Music, Melody and Emotions (APT)</i> ; 6:00pm-8:00pm; Deliverance Child Care Center, Bay Minette | 31 <i>Culturally-Sensitive Classroom</i> ; 10:00am-12:00pm; Discovery Island, Orange Beach |  |

August 2026

| Monday | Tuesday | Wednesday | Thursday | Friday | Saturday |
|---|--|---|---|---|---|
| | |  | | | 1 |
| 3 | 4 <i>Setting the Tone for Success: Launching a Great School Year</i> ; 6:00pm-8:00pm; The Learning Tree at First Fairhope <i>Music, Melody and Emotions (APT)</i> ; 5:30pm-7:30pm; Spots for Tots Child Care Center, Chatom | 5 | 6 <i>Count on It! Simple Strategies for Building Number Sense and Math</i> ; 6:00pm-8:00pm; Webinar  | 7 <i>Whole Child Literacy: Understanding The Foundations of Reading and Writing</i> ; 8:30am-12:30pm; Mars Hill Church, Mobile | 8 |
| 10  | 11 <i>Let's Talk: The Power of Language for Infants and Toddlers (APT)</i> ; 5:30pm-7:30pm; Mobile | 12 | 13 <i>Teasing, Bullying and Being Left Out</i> ; 6:00pm-8:00pm; Mobile | 14 | 15  |
| 17 | 18 <i>Literacy: Author's Study and Poetry (APT)</i> ; 6:00pm-8:00pm; Mobile | 19 <i>Sudden Infant Death Syndrome (SIDS) Prevention and Use of Safe Sleep Practices CCDF: 2 Prevention of Shaken Baby Syndrome and Abusive Head Trauma CCDF: 6</i> ; 9:30am-11:30am; Mobile | 20 <i>Making Connections (APT)</i> ; 6:00pm-8:00pm; Mobile | 21 | 22 |
| 24  | 25 <i>Breaking It Down: Computational Thinking (APT)</i> ; 6:00pm-8:00pm; Mobile | 26 (Day 2: AELG) Sessions 4, 5, 6; 8:30am-3:30pm; Mobile | 27 | 28 | 29  |
| 31 <i>Positive Guidance for Infants, Toddlers and Preschoolers (CTF)</i> ; 6:00pm-8:00pm; Mobile  | | | | | |

*All classes in Mobile County will be held at Gulf Regional Early Childhood Services unless otherwise noted.

September 2026

| Monday | Tuesday | Wednesday | Thursday | Friday | Saturday |
|---|---|---|--|---|---|
|  | <p>1 <i>One Book, Endless Learning Opportunities Session 1: Back-to-School & Community Connections</i>; 6:00pm-8:00pm; Mobile</p> | <p>2 <i>Getting Started 2026 (Day 1) CTF</i>; 8:30am-12:30pm; Mobile</p> <p><i>Thriving Together (APT)</i>; 6:00pm-8:00pm; Webinar</p>  | <p>3 <i>Getting Started 2026 (Day 2) CTF</i>; 8:30am-12:30pm; Mobile</p> <p><i>The Importance of Building Healthy Relationships Between Teachers and Students</i>; 6:30pm-8:30pm; Mobile</p> | <p>4 <i>Getting Started 2026 (Day 3) CTF</i>; 8:30am-12:30pm; Mobile</p> | <p>5</p>  |
| <p>7</p> <p>GRECS & EHS Closed for Labor Day</p> | <p>8 <i>Responding with Purpose: Protecting Dignity while Addressing Behavior</i>; 6:00pm-8:00pm; Webinar</p> | <p>9 <i>Preparing for the Unexpected CCDF: 5, 7</i>; 6:00pm-8:00pm; Mobile</p> | <p>10 <i>First-Aid and CPR Training</i>; 8:30am-12:30pm; Mobile</p> <p><i>Making Center Time Meaningful</i>; 6:00pm-8:00pm; Mobile</p> | <p>11</p> | <p>12</p> |
| <p>14</p>  | <p>15 <i>Tender Loving CARE for Infants and Toddlers</i>; 6:00pm-8:00pm; Mobile</p> | <p>16 <i>A Prevention of and Response to Emergencies Due to Food and Allergic Reactions CCDF: 4 and Handling and Storage of Hazardous Materials, including Correct Disposal of Bio-Contaminants CCDF: 8</i>; 2:00pm-4:00pm; Mobile</p> | <p>17 <i>Hands Down, Clean Counts!</i>; 6:30pm-8:30pm; Mobile</p> | <p>18 <i>Alabama Quality STARS: Lift Them Higher With Quality Early Care and Education</i>; 9:30am-11:30am; Mobile</p> | <p>19</p>  |
| <p>21 <i>Introduction to the Child Development Associate (CDA) Credential</i>; 6:00pm-8:00pm; Mobile</p> | <p>22 <i>Positive Guidance: Strategies for Challenging Behaviors</i>; 6:30pm-8:30pm; Mobile</p> | <p>23 (Day 3: AELG) <i>Sessions 7, 8, 9</i>; 8:30am-3:30pm; Mobile</p> | <p>24 <i>Seeing and Supporting Every Child: Neurodivergence in Infants and Toddlers</i>; 6:00pm-8:00pm; Mobile</p> | <p>25</p> | <p>26</p> |
| <p>28</p> | <p>29 <i>Come Sit... or Come Play? Rethinking Circle Time</i>; 6:00pm-8:00pm; Kid Plus Child Development Center, Foley</p> <p><i>Learning Environment for Infants and Toddlers (APT)</i>; 6:30pm-8:30pm; Mobile</p> | <p>30 <i>Infection Control and Administration of Medication CCDF: 1, 3</i>; 6:00pm-8:00pm; Mobile</p> |  | |  |



**JAS2026
Pass Along
to Parents**

Rusty's Outdoor Loose Parts Guide

Did You Know?

One of the simplest and least expensive ways to boost the fun and creativity in your outdoor space is to add "loose parts" for play. Loose parts can be anything such as cardboard boxes, kitchen pots and pans, blankets, tires, boards, traffic cones, milk crates, tennis balls, golf balls, ping pong balls, pine cones, branches, seed pods. It can be almost anything. Children don't really care as long as they can build with it, create with it, make stuff with it.



WHAT ARE LOOSE PARTS?

Loose parts are everyday materials children can:

- Move
- Combine
- Stack
- Build with
- Transform into something new



WHY THEY MATTER

Loose parts play helps children:

- Build creativity and imagination
- Develop problem-solving skills
- Strengthen communication and collaboration
- Explore science, math, and engineering concepts
- Build confidence by creating their own ideas

TRY THESE AT HOME

- Sticks
- Pinecones
- Cardboard boxes
- Pots & pans
- Milk crates
- Buckets
- PVC pipes
- Rocks
- Fabric scraps
- And more!



Stuff Says Yes!

Did you know that loose parts talk to children? It's true. Just like we adults say yes or no, the materials and stuff we provide for children say yes or no too. If a thing is too precious, too beautiful, too obviously loved by the adults it sends a message that it should be really only be used in certain ways: **the adults aren't going to want me wrecking this stuff. I better be careful.** Whereas loose parts that are a little beat up, a tire, scrap boards, used colanders, or tennis balls in abundance say to the child, "Use me how you'd like to. **Do whatever you want. The adults know I'm here but they've put me here for you.** Be creative! When we're working our best to say yes to children the stuff we supply should say yes too.

Home Challenge: Create a basket of 5-10 loose parts and let your child explore for 15 minutes.

No Instructions. No Right Answers. Just Play

WANT MORE IDEAS?



Scan the QR code to access Rusty Keeler's Complete Outdoor Loose Parts Guide.

www.rustykeeler.com

Training Levels

Basic = Most appropriate for entry-level professionals who are new to early childhood and/or school-age care. Basic Level Training covers a foundational understanding and demonstration of developing skills.

Intermediate = Most appropriate for professionals who have at least (2) years of experience and 120 hours of training in child development, and are moving toward more formal education. Intermediate Level Training includes expanding knowledge and application, and refining skills.

Advanced = Most appropriate for professionals who have at least three (3) years of experience and 30 credit hours in child development. Advanced Level Training focuses on a more thorough knowledge and understanding of developmentally appropriate practice and highly effective application and demonstration of skills.

DHR Performance Standards Training Areas

CD = Child Development

HSUP = Health, Safety, and Universal Precautions

QCCL = Quality Child Care and Licensing

CCPF = Child Care Professional and the Family

LD = Language Development

PDG = Positive Discipline and Guidance

AM = Administration and Management

CDA (Child Development Associate) Subject Areas

1. Planning a safe, healthy learning environment
2. Advancing children's physical and intellectual development
3. Supporting children's social and emotional development
4. Building productive relationships with families
5. Managing an effective program
6. Maintaining a commitment to professionalism
7. Observing and recording children's behavior
8. Understanding principles of child development and learning

Alabama Pathways Core Knowledge Areas (CKA)

CGD = Child Growth and Development

HSN = Health, Safety and Nutrition

LEE = Learning Experiences and Enrichment

DIV = Diversity

COA = Child Observation and Assessment (Planning for Individual Needs)

ICFC = Interaction with Children, Families and Communities

PPD = Personal and Professional Development

MA = Management and Administration

CCDF Training Areas

1. *Prevention and control of infectious diseases (including immunizations)*
2. *Sudden Infant Death Syndrome (SIDS) prevention and use of safe sleep practices*
3. *Administration of medication*
4. *Prevention of and response to emergencies due to food and allergic reactions*
5. *Building and physical premises safety, including identifying electrical hazards, bodies of water, and vehicular traffic*
6. *Prevention of Shaken Baby Syndrome and abusive head trauma*
7. *Emergency preparedness and response planning for natural or man-caused events*
8. *Handling and storage of hazardous materials, including correct disposal of bio-contaminants*
9. *If applicable, appropriate precautions in transporting children*
10. *First-aid and CPR*
11. *Recognizing and reporting child abuse and neglect*
12. *Identifying and serving homeless children and their families*
13. *Promoting the social, emotional, physical, and cognitive development of children, including those related to nutrition and physical activity, using scientifically-based, developmentally appropriate and age appropriate strategies*
14. *Caring for children in geographic areas with significant concentrations of poverty and unemployment*
15. *Implementing behavior strategies, including positive behavior interventions and support models that promote positive social and emotional development and reduce challenging behaviors, including reducing expulsions of preschool-aged children for such behaviors*
16. *Engaging parents and families in culturally and linguistically appropriate ways to expand their knowledge, skills and capacity to be meaningful partners in supporting their children's positive development*
17. *Understanding early neurological development*
18. *Using data to guide program improvement*
19. *Supporting positive development of school-age children*
20. *Improving the quality of programs and services for infants and toddlers*

Target Age Groups

Infants = Birth to 12 months

Toddlers = 1 and 2 year olds

Preschoolers = 3 and 4 year olds

School-agers = 5 to 12 year olds

ALL = Infants, Toddlers, Preschoolers, and School-agers





The Professional Development Registry (PDR) will allow you to:

- Create your own early childhood professional and training profile.
- Document your professional accomplishments and professional certificates.
- Identify your current place on the Alabama Pathways Professional Development Lattice.
- Collaborate with state-designated training agencies to help you identify and reach your goals.
- Link to official training organizations.
- Access to available resources.

Alabama Pathways Professional Development Registry - PDR Information July 29, 2026 | 10:00am-12:00pm 2 hrs

CCDF: 18 | AL Pathways: PPD | CDA: 5, 6 | DHR: QCCL, CCPF | ALL | Basic | ALL Counties Webinar

PRESENTER: Bernice Pettway, DHR

Participants will discuss the goal of Alabama pathways and how it can help early childhood professionals. Tutorial on the PDR. **No CEU Credit is awarded**

Your profile belongs to you! Take it along wherever your professional journey may take you! All you have to do is log in!

Things to remember:

- Website address – www.alabamapathways.org
- An updated User Guide is always available for your reference on your dashboard
- FAQ's - <https://www.alabamapathways.org/api/file/s/faq>
- When adding info into the profile, go to each tab to add information: education, employment, etc.
- A Help Desk will be available on the footer of the page on the left side.
- When setting up your account, remember to use your PERSONAL email.
- As a FINAL step, don't forget to associate yourself with the facility at which you are working.

Special Delivery Courses

Please Contact: Vicki Giles
251-473-1060
vgiles@grecs.org

We are offering special delivery courses for the following sessions:

- What is Your Piece: Professionalism
- Active Supervision of Children
- Guidance: Not Discipline
- Preparing for Emergencies

Please contact us for more details on how you can schedule a training or if there are other sessions you need!

One Book, Endless Learning Opportunities: A Series with Karen Morrison, PhD.

Kick off the school year with engaging literacy-based strategies that help children feel connected, confident, and ready to learn. In this interactive session, Dr. Karen Morrison will demonstrate how a single children's book can inspire meaningful learning experiences across the classroom. Participants will explore creative ways to extend stories into circle time discussions, small-group activities, learning centers, and art experiences that support both academic and social-emotional development.

One Book, Endless Learning Opportunities Session 1: Back-to-School & Community Connections

September 1, 2026 | 6:00pm-8:00pm 2 hrs/0.2 CEUs

CCDF: 13, 15, 17 | AL Pathways: CGD, LEE | CDA: 1, 2, 3, 8 | DHR: LD, PDG | Preschoolers, School-Agers | Intermediate | GRECS Training Room, Mobile

PRESENTER: Karen Morrison, PhD

Focusing on themes such as back-to-school transitions, friendship, feelings, and classroom routines, this training provides practical ideas for building a positive classroom community while strengthening early literacy skills.

Session 2 | October 6th, 2026

Session 3 | November 3rd, 2026

Smart Horizons On-Demand Courses

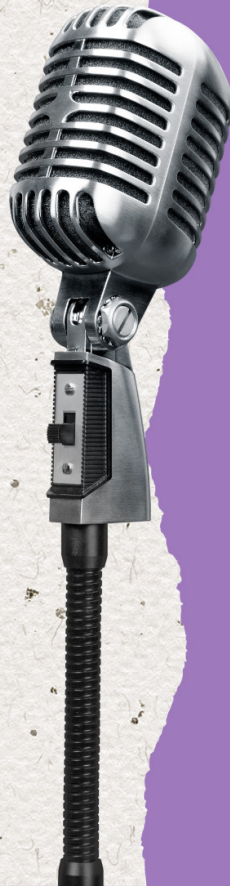
Our online training courses are designed to help you meet your professional goals. Whether you simply want to complete annual training requirements or you're trying to acquire training hours for a CDA, our courses provide a variety of engaging topics designed specifically for you!

We have scholarships available for this program!

Call Sofie McNamara at
251-473-1060
for more information!

AUG.
2026

SEASON 4



Featured Guests

Include:

Rachel Giannini
Krystal Allen
Rochelle Wilcox



APT Summer Online Training



Alabama Early Learning Guidelines (AELG) Online

July 6 – August 23, 2026

Introduction to the CDA Credential

July 6 – July 27, 2026

Scan for Facilitated Courses



Each Quarter, Alabama Public Television™ offers free online training for anyone interested in expanding their professional development! We encourage you to check out what they have in store and register directly through their website,

<https://aptv.org/education/learn-online/>
Registration opens on their website : **June 15, 2026**

Scan for more information about APT's Summer Online Training!

APT's On-Demand Training Catalog



ALABAMA'S NEW SPECIAL NEEDS CHILDCARE SUBSIDY

Benefits for Child Care Centers, Family and Group Home Providers

Availability

Alabama's new Special Needs Childcare Subsidy is available statewide.

Reimbursement

Participating centers will be reimbursed \$250 per week. There is no penalty when a child is not in attendance, so the center will be reimbursed regardless of attendance.

Inclusion Support

Childcare staff will have FREE access to training, consultation, technical assistance, and adaptive materials provided by Childcare Enhancement with a Purpose (CCEP) Inclusion Consultants statewide to support inclusion in the classroom.



About the Subsidy

Financial assistance is now available for qualifying Alabama families of a child with special needs to attend quality, inclusive childcare programs statewide. To qualify, the child must be receiving services (IFSP, IEP, private therapy, etc.).

To learn more, or to determine eligibility, contact Melissa Anderson. Statewide Childcare Enhancement with a Purpose Project Manager, at manderson@ucphuntsville.org or 256-859-4900.



The Resource Place

at



GULF REGIONAL
Early Childhood Services

Call today to make your appointment with us!

Browse our comprehensive lending library and workroom where you'll find:

Children's Books * Teacher Resource Books* Outdoor Play Materials*

Manipulatives* Puzzles* Puppets* Big Books * Laminating Machine *

Bulletin Board Paper and More!!!!

Monday | 9am-4pm
Tuesday | 9am-4pm
Wednesday | Closed
Thursday | 9am-4pm
Friday | 9am-2pm

Call
251- 473-1060

Scan to sign
up now!



visit our website for more information at www.grecs.org

Interested in a Membership?

Visit our website at www.grecs.org and fill
out our online application today!

If you need more assistance or have any
questions,
please contact

Marybeth Fields at 251-473-1060 ext 1702

The Lending Library
is now online!

Our library and resources are available
online to check out and reserve at your
convenience! More information to come,
subscribe to our newsletters to stay up-to-
date!



Register today.
Scan and select the
"getting started" tab.



Lift them higher with quality early
care and education.



334-604-6260



info@alabamaqualitystars.org

SUPPORT CHILDREN'S TRUST FUND

We are celebrating over 20 years of collaboration with the Children's Trust Fund supported through the Department of Child Abuse and Neglect Prevention!

Caring for the Caregiver allows us opportunities to provide training and support to Child Care providers.

We appreciate all who participate to make this project possible and help educate parents and caregivers on the prevention of child neglect and abuse.

The next time you renew your car tag, purchase this specialty tag at your local Probate office. It is tax deductible & proceeds directly fund community-based prevention programs.



Gulf Regional Childcare Management Agency, Inc.

3101 International Drive, Building 6 Mobile, AL 36606

Ph. 251.473.1060

NON-PROFIT ORGANIZATION
U.S. POSTAGE
PAID
MOBILE, AL
PERMIT NO. 148

Connect:



www.greecs.org



@GRECSMobile



greecs_communities



greecsmobile



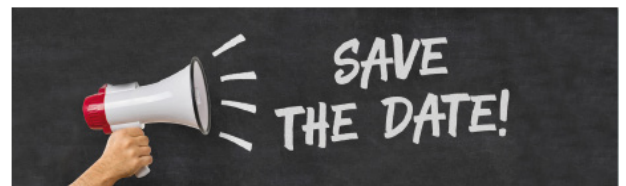
GULF REGIONAL
Early Childhood Services



United Way
of Southwest Alabama



**Make sure to like,
follow and friend us on
all of our media outlets
to stay up to date with all
the latest happenings and
events!**



July 3rd, 2026

GRECS & EHS offices are CLOSED in observance of Independence Day

September 7th, 2026

GRECS & EHS offices are CLOSED for Labor Day